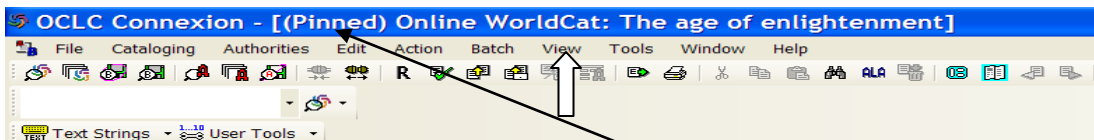


PINNING RECORDS IN OCLC

Pinning a record allows you to look at 2 or more records at one time.

To pin a record in OCLC, you first need to bring up the record you want to pin.

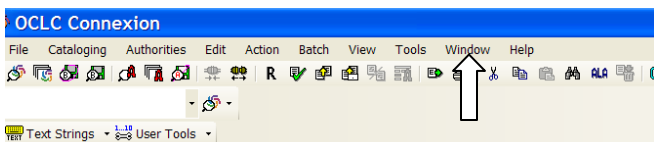
Once you have the record displayed on your screen click on Shift + F4 to pin the record, or you can use the pull down menu and click on View ->Pinned.



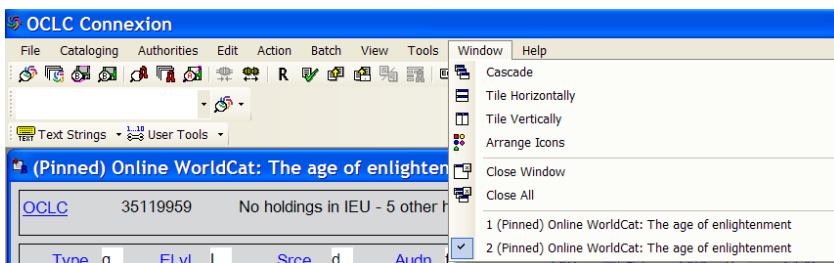
At the top of your screen you will see the record you chose is (Pinned). The record will stay pinned until you close out of the record.

At this point you can search for another record. If your intent is to pin the record to compare two different records, you will also need to pin the new record.

Once you have the new record pinned (using Shift + F4 or View->Pinned) you can click on the Window box at the top of your screen



Pulling down the window tab gives you options on how you can display the records you have pinned.



This display also shows you what records you have pinned. Click on your preferred display allowing you to view both records at the same time.

Vertical view

The screenshot shows the OCLC Connexion interface with two vertical views of WorldCat records. The top window displays record 35119959 with 5 other holdings, and the bottom window displays record 231846625 with 45 other holdings. Both records are for 'The age of enlightenment'.

Type	g	ELvl	l	Srcce	d	Audn	f	Ctrl
BLvl	m	Form		GPub		Time	0 9 0	MRec
Desc	a	TMat	v	Tech	l	DtSt	s	Dates

Type	g	ELvl	K	Srcce	d	Audn		Ctrl
BLvl	m	Form		GPub		Time	0 4 8	MRec
Desc	a	TMat	v	Tech	l	DtSt	s	Dates

Horizontal view

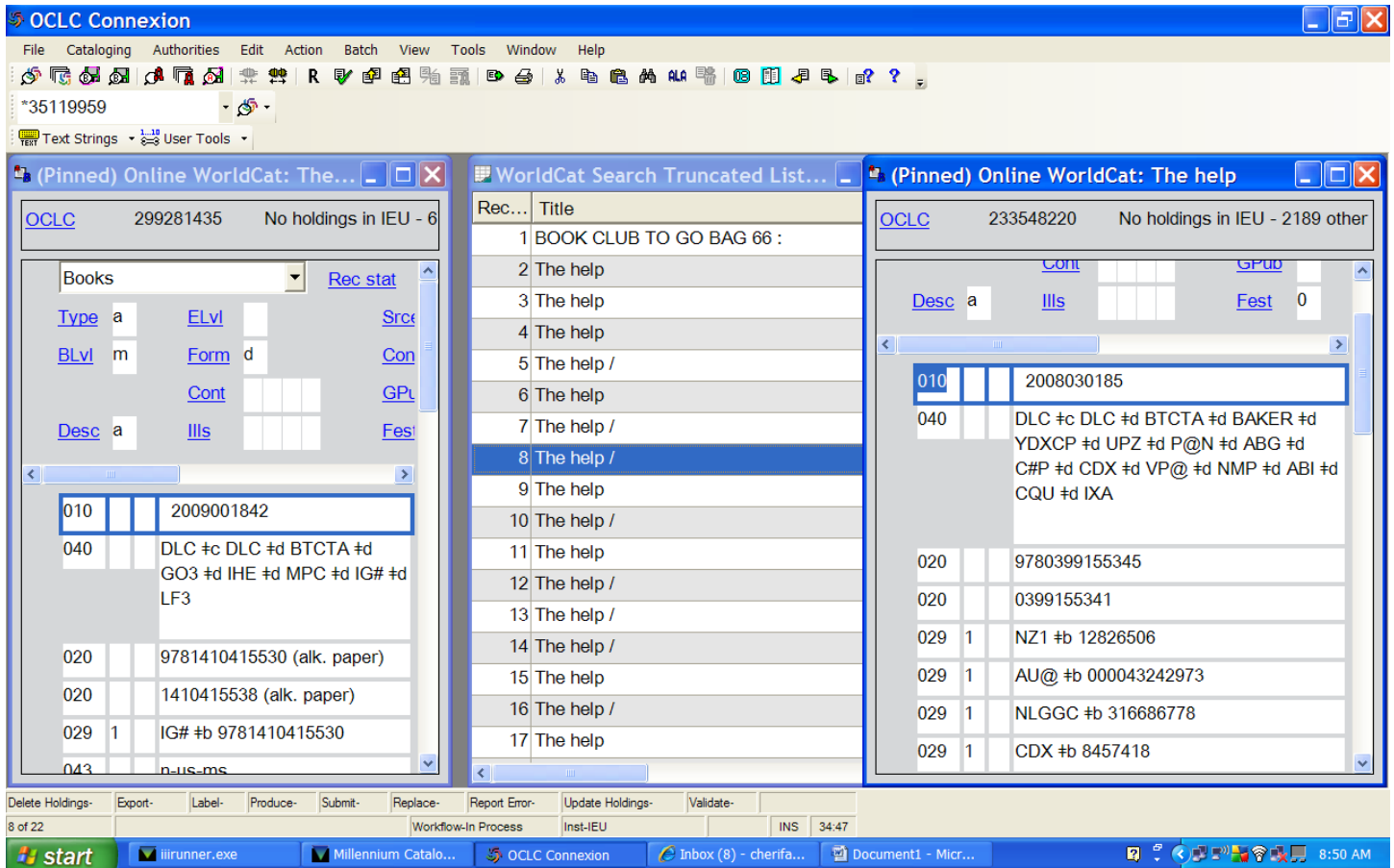
The screenshot shows the OCLC Connexion interface with two horizontal views of WorldCat records. The top window displays record 35119959 with 5 other holdings, and the bottom window displays record 231846625 with 45 other holdings. Both records are for 'The age of enlightenment'.

Type	g	ELvl	l	Srcce	d	Audn	f	Ctrl
BLvl	m	Form		GPub		Time	0 9 0	MRec
Desc	a	TMat	v	Tech	l	DtSt	s	Dates

Type	g	ELvl	K	Srcce	d	Audn		Ctrl
BLvl	m	Form		GPub		Time	0 4 8	MRec
Desc	a	TMat	v	Tech	l	DtSt	s	Dates

You can edit these records in this display just as you can with a single record display. Closing the records when you are finished looking at them unpins them.

When you choose your records from a search menu without closing out of the search menu and pin your records, the search menu will also show in your pinned records.



If this is the case you can just use your cursor to pull the two records together thus hiding the search screen.

TEST text strings * g3 user tools

(Pinned) Online WorldCat: The help

OCLC 299281435 No holdings in IEU - 678 other holdings

Books

Type	a	ELvl		Srcce		Audn	
BLvl	m	Form	d	Conf	0	Biog	
Desc	a	Ills		Fest	0	DtSt	r

010 | | 2009001842

040 | | DLC #c DLC #d BTCTA #d GO3 #d IHE #d MPC #d IG# #d LF3

020 | | 9781410415530 (alk. paper)

020 | | 1410415538 (alk. paper)

029 | 1 | IG# #b 9781410415530

043 | | n-us-ms

050 | 1 | 0 | PS3619.T636 #b H45 2009b

(Pinned) Online WorldCat: The help

OCLC 233548220 No holdings in IEU - 2189 other holdings; 3 other IRs

Cont		GPub		LitF		Indx	
Desc	a	Ills		Fest	0	DtSt	s

010 | | 2008030185

040 | | DLC #c DLC #d BTCTA #d BAKER #d YDXCP #d UPZ #d P@N #d ABG #d C#P #d CDX #d VP@ #d NMP #d ABI #d CQU #d IXA

020 | | 9780399155345

020 | | 0399155341

029 | 1 | NZ1 #b 12826506

029 | 1 | AU@ #b 000043242973

029 | 1 | NLGCG #b 316686778

029 | 1 | CDX #b 8457418

043 | | n-us-ms

050 | 0 | 0 | PS3619.T636 #b H45 2009